

# fair isle scarf

*Designed by Monica Russel*

This scarf is one in the collection of 6 essential items to keep you warm and cosy on chilly days. All the items mix and match so just choose your favourite ones to add to your wardrobe. The scarf is knitted in a simple fair isle and the pattern is suitable for an intermediate knitter. The scarf has a garter stitch edge that will stop the sides from curling.

## Yarn

8 x 50g balls (94m/103yds) Rooster Almerino Aran  
(50% baby alpaca/50% merino wool)

Yarn A: 309 Ocean x 2 balls

Yarn B: 320 Silver x 3 balls

Yarn C: 321 Sorbet x 2 balls

Yarn D: 308 Spiced Plum x 1 ball

## Needles

1 pair of 4.5mm (UK 7/ US 7) single-pointed needles

1 pair of 5mm (UK 6/ US 8) single-pointed needles

1 tapestry needle

## Size

Width: 9.5in (24cm)

Length: 75in (188cm)

## Tension

22sts and 21rows to 10cm (4in) square using fair isle pattern and 5mm (US 8) knitting needles.



*Hat featured in the image is not included in this pattern – see Fair Isle Beanie pattern*

### Abbreviations

**RS** right side  
**WS** wrong side  
**KTBS** knit through the back of the stitch to form a neat/ tighter edge when using a traditional cast on  
**K** knit  
**P** purl  
**sts** stitches

### Knitters Notes

To avoid gaps in work twist the yarn every 2–3 sts and at the start of the main section after the garter stitch border  
 The chart is read from right to left on the right side of work and all odd numbered rows are knitted  
 The chart is read from left to right on the wrong side and all even numbered rows are purled.

### Pattern Notes For Knitters Using The Chart

The chart shows the fairisle pattern only. The first 4 and last 4 stitches on the RS and WS row are knitted in the main colour of the section.

### Knitting The Scarf

Using 5mm needles and yarn A cast on 48sts  
 Next row KTBS to form a neat edge (this is only used for a traditional cast on)  
 Row 1 (RS): K4\* K1, P1: rep from \* to last 4sts, K4  
 Row 2: K4, purl to last 4 sts, K4

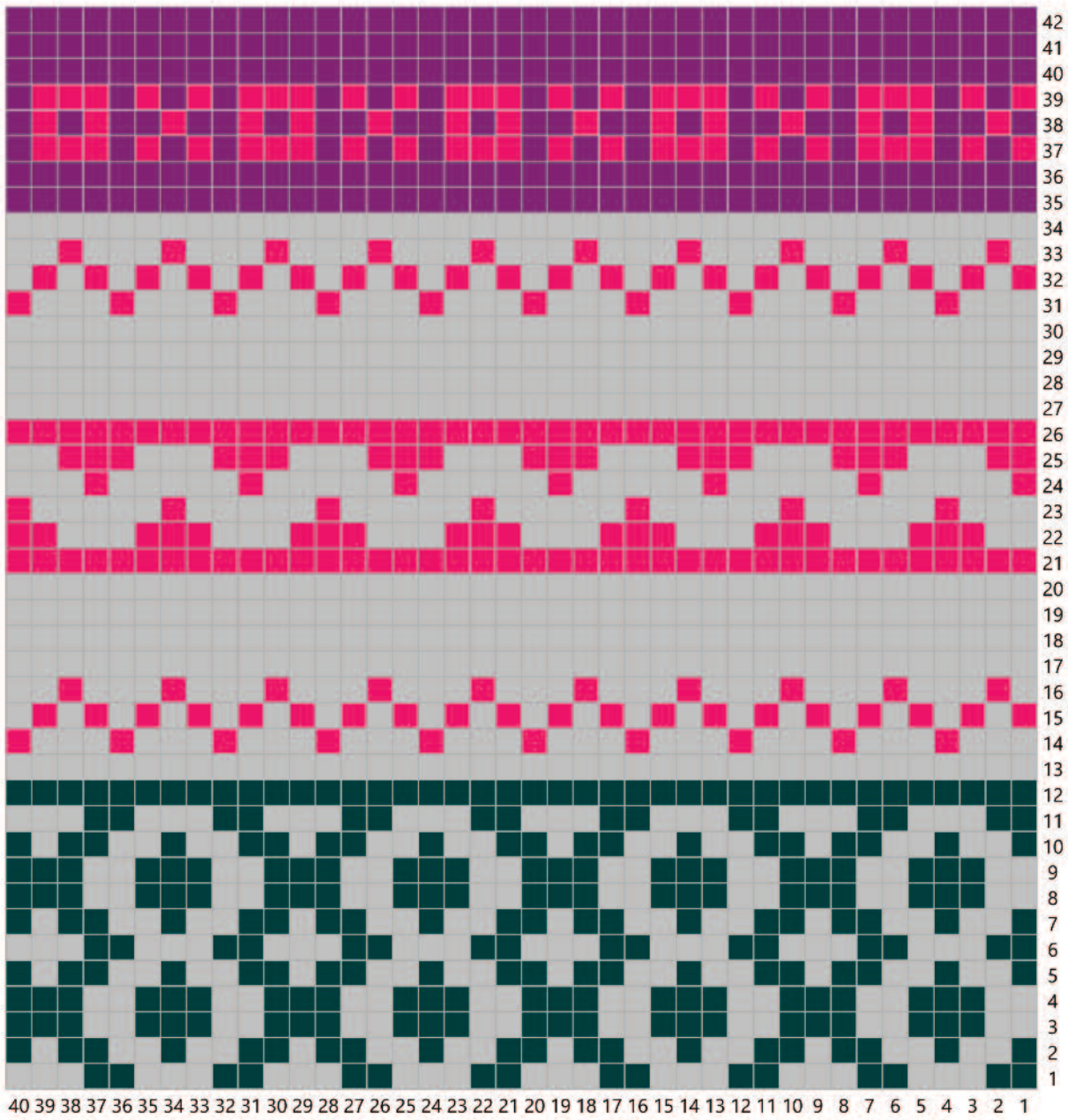
### Main Pattern

Start working from chart line 1 or follow instructions below.  
 Rows 1 and 11: K4A, \* K2A, K3B: rep from \* to last 4sts, K4A  
 After row 11: Cut off yarn B  
 Rows 2 and 10: K4A, \* P1A, P1B, P2A, P2B, P1A, P2B, P1A: rep from \* to last 4sts, K4A  
 Rows 3 and 9: K4A, \* K2B, K3A: rep from \* to last 4sts, K4A  
 Rows 4 and 8: K4A, \* P3A, P2B, rep from \* to last 4sts, K4A  
 Rows 5 and 7: \* K4A, \* K1A, K2B, K1A, K2B, K2A, K1B, K1A, rep from \* to last 4 sts, K4A  
 Row 6: K4A, \* P3B, P2A, rep from \* to last 4sts, K4A  
 Row 12: K4A, purl to last 4sts, K4A  
 Cut off yarn A  
 Row 13: Knit using colour B  
 Row 14: K4B,\* P1C, P3B, rep from \* to last 4 sts, K4B  
 Row 15: K4B, \* K1C, K1B, rep from \* to last 4 sts, K4B  
 Row 16: K4B, P2B, \*P1C, P3B rep from \* until last 6sts, P1C, P1B, K4B  
 Rows 17 and 19: Knit using colour B  
 Rows 18 and 20: K4B, purl to last 4 sts, K4B  
 Cut off yarn B  
 Row 21: Knit using colour C  
 Row 22: K4C, P2C \* P3B, P3C, rep from \* to last 6sts, P2B, K4C  
 Row 23: K4C, K2B, \* K1B, K1C, K4B, rep from \* to last 6sts, K1B, K5C  
 Row 24: K4C, P2B, \* P1B, P1C, P4B, rep from \* until last 6sts, P1B, P1C, K4C

Row 25: K6C, \* K3B, K3C, rep from \* to last 6sts, K2B, K4C  
 Cut off yarn B  
 Row 26: K4C, purl to last 4 sts, K4C  
 Rows 27–30: As rows 17–20 using colour B  
 Row 31: K4B, \*K3B, K1C, rep from \* to last 4 sts, K4B  
 Row 32: K4B, \*P1B, P1C, rep from \* to last 4sts, K4B  
 Row 33: K4B, \*K1B, K1C, K2B, rep to last 4 sts K4B  
 Cut off yarn C  
 Row 34: K4B, purl to last 4 sts, K4B  
 Cut off yarn B  
 Row 35: Knit using colour D  
 Row 36: K4D, purl to last 4sts, K4D  
 Row 37: K4D, \* K1C, K1D, K1C, K1D, K3C,K1D, rep from \* to last 4sts, K4D  
 Row 38: K4D, \* P1D, P1C, P1D, P1C, P2D, P1C, P1D, rep from \* to last 4sts, K4D  
 Row 39: As row 37  
 Cut off yarn C  
 Row 40: K4D, purl to last 4 sts, K4D  
 Row 41: Knit using colour D  
 Row 42: K4D, purl to last 4sts, K4D  
 These 42 rows are the pattern repeat.  
 Now start pattern again from row 1 of main pattern and repeat the 42 rows another 8 times and then the first 12 rows once more.  
 Change to 4.5mm needles. The scarf will now be completed using yarn A  
 Next 2 rows: K4\* K1, P1: rep from \* to last 4sts, K4  
 Cast off all sts

### Completing the scarf

Sew in all loose ends by weaving them in to the back of the scarf.  
 Steam the scarf lightly.



Copyright © 2015 Rooster Yarns. The entire contents of this leaflet are subject to copyright. The purchase of this patterns allows you to use it for personal non-commercial purposes. No part of this publication may be reproduced in any form. Colour reproduction is as close as printing will allow.