

CAROLYN
by ROS WILSON



Curves 
artesano dk

Gentle waist shaping and raglan sleeves make for comfort with flair.

Sizes: 16[18:20:22:24]

Actual sweater measurements:

Bust: 10[115:120:125:130]cm

(43[45:47:49:51]ins)

Overall finished Length

68[71:74:77.5:80.5]cm

(27[28:29:30.5:32]ins)

Figures in square brackets refer to larger sizes; where there is only one set of figures this applies to all sizes.

You will need:

Artesano 100% Alpaca DK 50 gms
13[14:15:15:16] x 50 gm in shade
Bolivia (0785) Main Colour
1 ball in Peru (0178) – Contrast A
1 ball in Uruguay (3138) – Contrast B
1 ball in Forget-me-not (C864) – Contrast C
1 ball in Biscuit (SFN21) – Contrast D

Pair of 3.75mm needles
4 x 3.75mm long double-pointed needles
2 stitch holders

Note: Yarn amounts given are based on average requirements and are approximate.

Tension:

23 sts and 30 rows to 10cm over stocking stitch using 3.75mm needle. Use larger or smaller needles if necessary to obtain correct tension.

Abbreviations:

St(s) = Stitch(es)

K = knit

P = purl

St st = stocking stitch (one row K one row P)

RS = right side of garment

WS = wrong side of garment

Dec 1 = K or p the next two stitches together

Mk1 = create a new stitch by knitting or purling into the loop below the next st.

Inc 1 = increase by knitting or purling twice into the next stitch.

MC = Main Colour

YB = move yarn to back of work

Back

□

Hem

With 3.75mm needles and MC cast on 128[134:141:147:153] sts.

Work 6 rows in st st, ending with a

P row.

Next 3 rows K each row (this will form a fold line for the hem.)

Resume st st with a P row and work 6 further rows.

Fair Isle Detail

Next row, with Contrast A, Purl.

Next row, with MC, Knit.

Next row, with MC, P 4[7:0:3:6]

P20, Mk1, repeat from * to *

to last 4[7:1:4:7] sts, P4[7:1:4:7]

(134[140:146:154:160] sts)

Work rows 1 to 19 from the chart below, starting at the correct point for your pattern size and with K rows worked from right to left and P rows from left to right.

Dec 1 st at each end of row 12, keeping continuity of pattern.

(132[138:144:152:158] sts)

In MC P3(6:9:2:5) *P19, P2tog* repeat to last 3(6:9:13 sts, P3[6:9:3:6]

(126[132:138:145:151] sts)

In MC K 1 row

In Contrast A, P1 row

Main Body

Next row, dec 1 st at each end of row. (124[130:136:143:149] sts)

Continue in MC and st st, work 20[20:20:30:30] rows decreasing 1 st at each end of every 10th row. (120[126:132:137:143] sts)
Work straight until piece measures 22[23:24:25:26:27] cm from fold line of hem.

Next row, Inc 1 st at each end of row (122[128:134:139:145] sts)

Work 20[20:20:30:30] rows Inc 1 st at each end of every 10th row

(126[132:138:145:151] sts)
Continue straight until piece measures 42[44:46:48:50] cm from fold line of hem, ending with a P row.

□

Back Raglan Shaping

With RS facing, cast off 5[5:6:6:6] sts at the beginning of the next two rows (116[122:126:133:139] sts).

Continue shaping as follows:

**

K 3, Sl1, K1, PSSO, K to last 5 sts, K2tog, K3.

Next row, Purl

**

Repeat these two rows until 44[46:48:50:52] sts remain, ending with a P row.

Right side of Neck

With RS facing, K3, Sl1, K1, PSSO, K9[10:]. Turn. (13[14:15:16:17] sts)

Row 1: Cast off 4 sts at neck edge, P

to end.

Row 2: K3, Sl1, K1, PSSO, K to end.

Row 3: Cast off 3[3:4:4:4] sts, P to end (5[6:6:7:8] sts)

Dec 1 st at raglan edge on Knit rows while decreasing 1 stitch at neck edge on every row until 1 st remains. Break off yarn and pass end of yarn through the remaining stitch to fasten off.

Left side of Neck

With RS facing, rejoin yarn on remaining 30[31:32:33:34] sts, K16 sts and slip these onto a stitch holder, K to last 5 sts, K2tog, K3. (13[14:15:16:17] sts)

Row 1: Purl

Row 2: Cast off 4 sts at neck edge, K to last 5 sts K2tog, K3

(9[10:11:12:13]

Row 3: Purl

Row 4: Cast off 3[3:4:4:4] sts, at neck edge, K to last 5 sts, K2tog, K3 (5[6:6:7:8] sts)

Dec 1 st at raglan edge on Knit rows while decreasing 1 stitch at neck edge on every row until 1 st remains. Break off yarn and pass end of yarn through the remaining stitch to fasten off.

Front

Work as Back from □ to □ (126[132:138:145:151] sts)

Front Raglan Shaping

With RS facing, cast off 5[5:6:6:6] sts at the beginning of the next two rows (116[122:126:133:139] sts).

Continue raglan shaping as follows:

**

K 3, Sl1, K1, PSSO, K to last 5 sts, K2tog, K3.

Next row, Purl

**

Repeat these two rows until 84[86:88:90:92] sts remain, ending with a P row.

Neck Shaping

With RS facing, K3, Sl1, K1, PSSO, K26[27:28:29:30]. Turn. (31[32:33:34:35] sts)

Keeping continuity of the raglan shaping on K rows, continue with neck shaping as follows:

Left side of Neck

Row 1: Cast off 5 sts at neck edge, P to end. (26[27:28:29:30] sts)

Row 2: K3, Sl1, K1, PSSO, K to end.

Row 3: Cast off 3 sts at neck edge, P to end. (22[23:24:25:26] sts)

Row 4: Row 2: K3, Sl1, K1, PSSO, K to end.

Row 5: Cast off 3 sts at neck edge, P to end. (18[19:20:21:22] sts)

Row 6: K3, Sl1, K1, PSSO, K to end. Now decrease 1 stitch at neck edge on every Purl row while keeping continuity of raglan shaping on each knit row until 6 sts remain.

P1 row

K2tog at the beginning of each knit row until 2 sts remain.

K2tog and break off yarn. Feed the yarn end through the remaining stitch to fasten off.

Right side of Neck

Rejoin yarn on the remaining 52[54] sts,

K 20 sts and slip these onto a stitch holder, K to last 5 sts, K2tog, K3.

(31[32:33:34:35] sts)

P 1 row

Row 1: Cast off 5 sts at neck edge, K to last 5 sts, K2tog, K3.

(25[26:27:28:29] sts)

Row 2: Purl

Row 3: Cast off 3 sts at neck edge, K to last 5 sts, K2tog, K3

(21[22:23:24:25] sts)

Row 4: Purl

Row 5: Cast off 3 sts at neck edge, K to last 5 sts, K2tog, K3

(17[18:19:20:21] sts)

Row 6: Purl

Now decrease 1 st at neck edge of every K row while keeping continuity of raglan shaping until 6 sts remain.

P 1 row.

K2tog at the end of each Knit row until 2 sts remain.

K2tog and break off yarn. Feed the yarn end through the remaining stitch to fasten off.

Sleeves (knit 2 at the same time)

Hem

With 3.75 mm needles and MC, cast on 58[60:62:64:66] sts.

Starting with a K row, work 30 rows in st st. (this will form a deep hem to cover the reverse side of the Fairisle)

Next three rows, K. (this will form a fold line for the sleeve hem).

Purl 1 row

Knit 1 row

Fair Isle Detail

Using Contrast A, Purl 1 row.

Next row, with MC, Knit.

Next row, with MC, P2[3:4:5:6]

P9, Mk1, repeat from * to * to last 2(3:4:5:6) sts, P 2[3:4:5:6]

(64[66:68:70:72] sts)

Continuing in st st, work rows 1

to 19 rows of chart, starting where shown for the correct size, with K rows worked from right to left and P rows from left to right. Strand yarn loosely behind work.

In MC work 3 rows of st st

Next row, in Contrast A, Knit, increasing 1 st at end of row

(65[67:69:71:73] sts)

Main Sleeve

Continuing in MC and st st, inc 1 st at each end of the next and every following 5th row until there are 97[101:105:109:113] sts.

Work straight until sleeve measures 41[43:45:47:49] cm from fold line, ending with a purl row.

Raglan Shaping

Cast off 5[5:6:6:6] sts at the beginning of the next two rows.

(87[91:93:97:101] sts)

**

K 3, Sl1, K1, PSSO, K to last 5 sts, K2tog, K3.

Next row, Purl

**

Repeat these two rows until 25 sts remain, ending with a purl row.

Right Sleeve Top

Working on the first sleeve only, shape top as follows:

Row 1: Cast off 3 sts, K to last 5 sts, K2tog, K3. (21 sts)

Row 2: Purl.

Row 3: Cast off 3 sts, K to last 5 sts, K2tog, K3 (17 sts)

Row 4: Purl

Row 5: Cast off 3 sts, K to last 5 sts, K2tog, K3 (13 sts)

Row 6: Purl

Row 7: Cast off 3 sts, K to last 5 sts, K2tog, K3 (9 sts)

Row 8: Purl

Row 9: K4, K2tog, K3 (8 sts)

Row 10: Purl

Row 11: K2 tog, K4, K2tog (6 sts)

Row 12: Purl

Row 13: K2tog, K2, K2tog (4 sts)

Row 14: Purl

Row 15: K2tog, K2tog (2 sts)

Row 15: Purl

Row 16: K2tog and fasten off.

Left Sleeve Top

Row 1: K3, Sl1, K1, PSSO, K to last 5 sts, K2tog, K3. (23 sts)

Row 2: Cast off 3 sts, purl to end. (20 sts)

Row 3: K3, Sl1, K1, PSSO, K to end. (19 sts)

Row 4: Cast off 3 sts, purl to end. (16 sts)

Row 5: K3, Sl1, K1, PSSO, K to end (15 sts)

Row 6: Cast off 3 sts, purl to end. (12 sts)

Row 7: K3, Sl1, K1, PSSO, K to end (11 sts)

Row 8: Cast off 3 sts, purl to end. (8 sts)

Row 9: K2tog, K to end (7 sts)

Row 10: Purl

Row 11: K2tog, K3, K2tog (5 sts)

Row 12: Purl

Row 13: K2tog, K1, K2tog (3 sts)

Row 14: Purl

Row 15: K2tog, K1 (2 sts)

Row 16: Purl

Row 17: K2tog and fasten off

To make up

With RS together, pin each of the raglan seams and back stitch one stitch in from the edge. Lightly press seam from the wrong side with a cool iron.

Neck Edge

With RS facing use 3.75mm double-pointed needles and MC to pick up sts purlwise as follows:

From left back raglan seam to left front raglan seam: 20[21:22:23:24] sts

Down to front stitch holder:

26[27:28:30:32] sts

From front stitch holder: 20 sts

Up to right front raglan seam:

26[27:28:30:32] sts

From right front raglan seam to right back raglan seam: 20[21:22:23:24] sts

To back stitch holder:

14[16:18:19:20] sts

From back stitch holder: 16 sts

Up to left back raglan seam:

14[16:18:19:20] sts

Total 156[164:172:180:188] sts

Work 2 rows Purl, then start 2-colour rib as follows:

Row 1: [In MC, K2, YB, in Contrast A, K2, YB] repeat to end of row.

Row 2: [In MC K2, in Contrast A, K2] repeat to end of row.

Row 3: [In MC, K2, YB, in Contrast A, P2, YB] repeat to end of row.

Repeat rows 2 and 3 once more.

Repeat Row 2 once more. Break off contrast A.

In MC, *P2, P2tog to end of row (117[123:129:135:141] sts)

Next row *P7, P2tog to last 0[6:3:0:6] sts, P0[6:3:0:6]

(104[110:115:120:126] sts)

Neck Facing
Knit 2 rows.

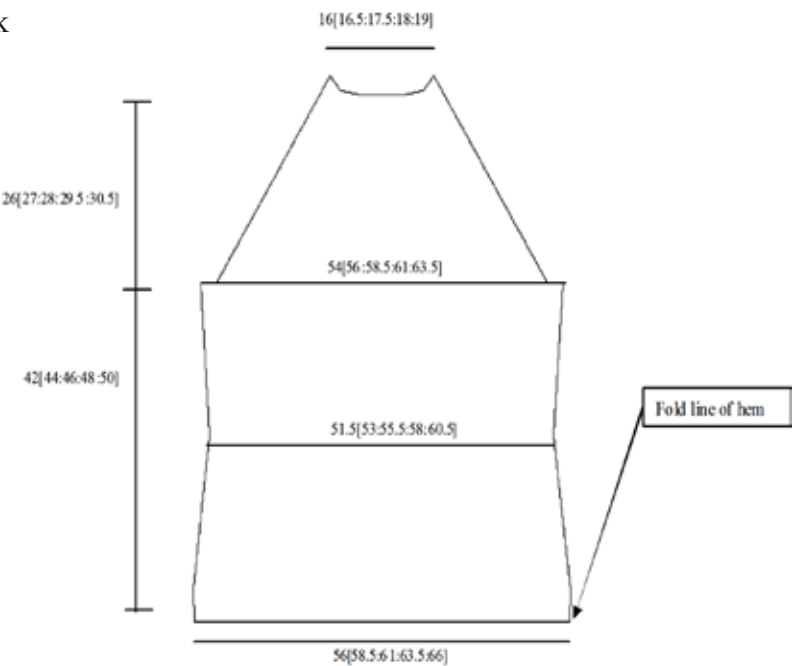
Next row *K5, Mk1 until last
4[0:0:0:1] sts, K4[0:0:0:1]
(124[132:138:144:151] sts)
K 4 further rows without shaping.
Next row *K4 Mk1 to last
0[0:2:0:3] sts, K0[0:2:0:3]
(155[165:172:180:188] sts)
Cast off very loosely.

Turn facing to wrong side of work
and slip stitch loosely in place so
that it lies flat.

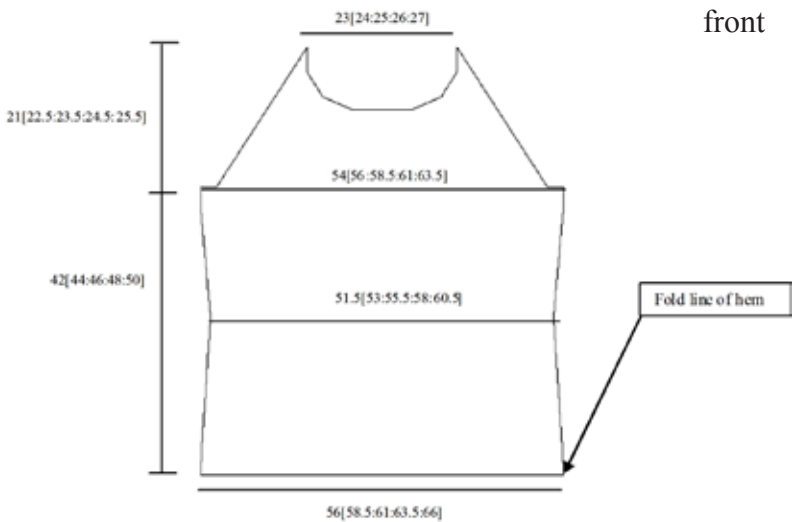
With RS together, pin and stitch
each side seam. Press seam lightly
from the wrong side. Turn the hem
to the wrong side along the fold line
and slip stitch loosely into place.

Turn the sleeve facings to the wrong
side along the garter stitch fold line.
Slip stitch loosely into place to cover
the back of the Fair Isle border.

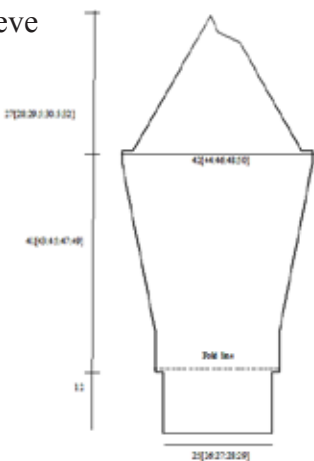
back



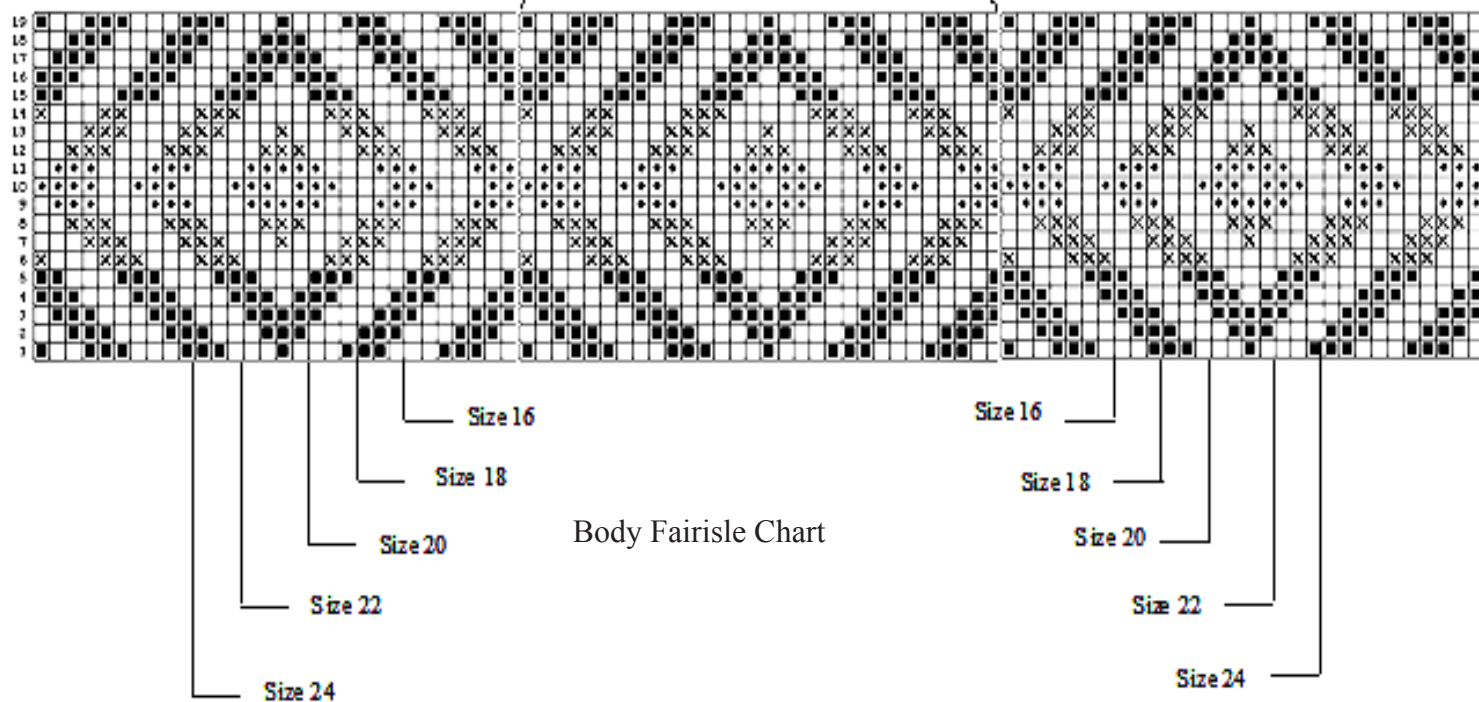
front



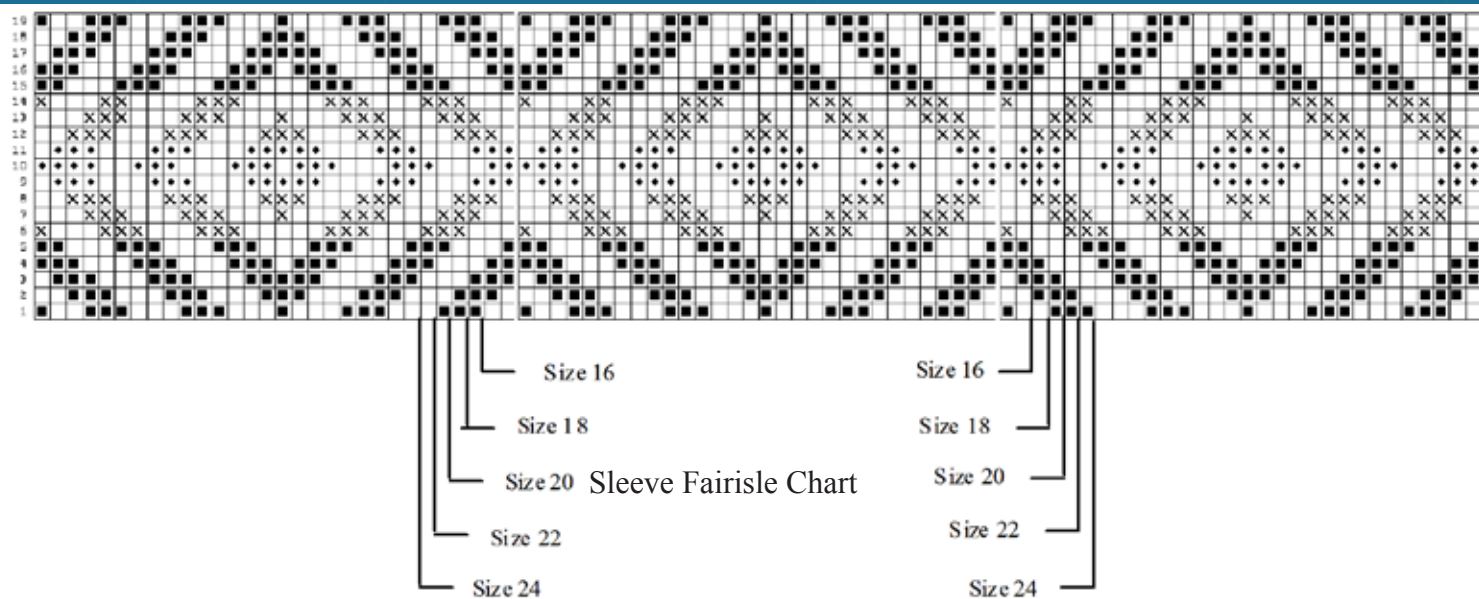
sleeve



Pattern Repeat - 30 sts



■ = Contrast B (Uruguay)
 X = Contrast C (Forget-me-not)
 ◆ = Contrast D (Biscuit)



Suggested Alternatives

Curves is a new collection of flattering designs for women sizes 16-24. This patterns should be knitted using Artesano DK superfine alpaca.

For more details of the collection and to find your nearest stockist please visit our website www.artesanoynarns.co.uk or call us on 0118 9503350

Credits: Knitwear Design by Ros Wilson for Artesano Ltd.
 Graphic Design by Fern Spooner
 Styling by Sue Coomber
 Model - Amy Steed
 Photography by David Hatfull of Diem Photography.
 © Artesano Ltd. 2008. These patterns are sold on the understanding that they should not be knitted for re-sale



SFN41 Bonbon



5340 Brazil



SFN21 Biscuit



SFN10 Cream



C/4S Fern