

# ocean headband

*Designed by Monica Russel*

This is a fun headband that will look great with many of your favourite items of clothing. It is part of a range of mix and match winter accessories and will use up many of the oddments of yarn from making the fair isle scarf.

## Yarn

3 x 50g balls (94m/103yds) Rooster Almerino Aran (50% baby alpaca/50% merino wool)

Yarn A: 309 Ocean x 1 ball

Yarn B: 321 Sorbet x 1 ball

Yarn C: 308 Spiced Plum x 1 ball

## Needles

1 pair of 4.5mm (UK 7/ US 7) single-pointed needles

1 pair of 5mm (UK 6/ US 8) single-pointed needles

1 tapestry needle

## Size

Width: 50cm

Length: 10cm

## Tension

22sts and 21rows to 10cm (4in) square using fair isle pattern and 5mm (US 8) knitting needles.

## Note

To avoid gaps in work twist the yarn every 2–3 sts.



## Abbreviations

**RS** right side

**WS** wrong side

**KTBS** knit through the back of the stitch on traditional cast on to make a tighter/ neater edge.

**K** knit

**P** purl

**sts** stitches

**inc 1** increase by knitting into the front and back of the stitch

**st st** stocking stitch

Using 4.5mm needles cast on 104sts

Next Row: KTBS

## Main Pattern

Change to 5mm needles

Row 1: Using colour A \* K1, P1 rep from \* to end of row

Row 2: Purl using colour A

Rows 3 and 4: st st yarn B

Working from chart A

Odd numbered rows are knitted and worked from right to left

Even numbered rows are purled and worked from left to right

The pattern is repeated 13 times altogether

Rows 5–10: Work pattern from chart A, noting the pattern is repeated 13 times across the headband.

Cut off yarns A and B

Row 11: Knit colour C

Working from chart B

The odd numbered rows are purled and the even numbered rows are knitted

Rows 12–14: Work from chart B

Cut off yarn B

Row 15: Knit using colour C

Cut off yarn C

Rows 16–21: Work from chart C

The odd numbered rows are purled and the even numbered rows are knitted

Row 22: Purl colour B

Row 23: Knit colour B

Cut off yarn B

Row 24: Purl colour A

Row 25: Knit colour A

Change to 4.5mm needles

Row 26: \* K1A, P1A, rep from \* to end

Cast off all sts

Chart A

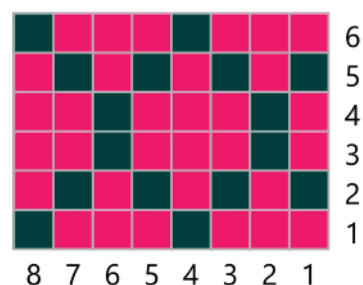


Chart B

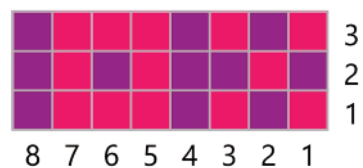
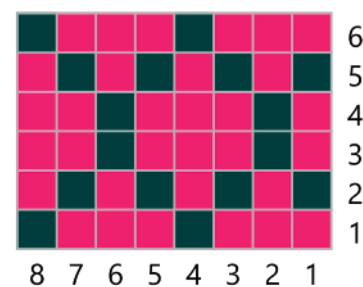


Chart C



## Making up

With right sides facing, use a tapestry needle and mattress stitch to join the end seams.